

**M** Manhattan  
School of Music



2425

PERFORMANCE  
SEASON

This year's performance season has been inspired by a unifying theme: ***Humanity in Harmony: Rituals, Resistance, and Resilience***. We hope during this election year, the biggest in human history with over half the world's population having the opportunity to vote in 72 countries, that this theme reflects the power of the arts to unite us even in moments of discord and differences. The collective experience of collaboration – creating together – reminds us that even in our differences we can find common ground, stand up to tyranny and oppression, and elevate our work as artists to fulfill the hope and promise of a better tomorrow.

**James Gandre**, President

**Joyce Griggs**, Executive Vice President and Provost

Faculty and Administration of the Artistic Planning Committee



*Manhattan School of Music's public programs are made possible in part by the New York State Council on the Arts with the support of the Office of the Governor and the New York State Legislature.*



*Funded in part by a grant from the New York City Tourism Foundation.*

**M**Manhattan  
School of Music

# MSM JAZZ ORCHESTRA

**Jim Saltzman** (DMA '18), Director

With **Terri Lyne Carrington** (HonDMA '20), percussion, and

**Ingrid Jensen**, trumpet

*Dean of Jazz Arts*

THURSDAY, OCTOBER 10, 2024 | 7:30 PM  
NEIDORFF-KARPATI HALL

# WELCOME FROM INGRID JENSEN, DEAN OF JAZZ ARTS

Welcome one and all.

Tonight, we launch the first in our series of concerts and events celebrating the 40th Anniversary of Manhattan School of Music's Jazz Arts department.

We begin our observance of this incredible milestone with an evening of powerful and inspiring music relating to the MSM 2024–25 theme:

*Rituals, Resistance and Resilience.*

With humanity and harmony as our guide, we present a program that takes us on a journey through space and time, focusing most of our material on highlighting the playing and pathways our special guest composer, bandleader, and drummer, Terri Lyne Carrington (HonDMA '20).

Terri is not only an incredible musician and performer who brings light, life, and truth to every musical moment she graces, but she is also an educator and a needle mover in the world of higher education. Her astute leadership at the groundbreaking Institute of Jazz and Gender Justice at Berklee College of Music in Boston is nothing less than brilliant and has brought forth a long overdue shift in the education system relating to music and the business.

Much of the music this evening has direct ties to the legacy of MSM through the arranging scope of the one and only Jim McNeely: from a piece by recent Honorary Doctorate Linda Oh that Jim arranged, to a composition from alumnus and new composition faculty member Chris Zuar, to a celebration song by Wayne Shorter arranged by doctoral graduate Andrew Rathbun.

I sincerely hope you enjoy tonight's concert and can frequent all of the upcoming *MSM Jazz Art Celebrates 40* events ahead.

In the music,

A handwritten signature in black ink, appearing to read 'Ingrid Jensen', with a long, sweeping horizontal line extending to the right.

Ingrid Jensen, Dean of Jazz Arts

THURSDAY, OCTOBER 10, 2024 | 7:30 PM  
NEIDORFF-KARPATI HALL

# MSM JAZZ ORCHESTRA

**Jim Saltzman** (DMA '18), Director

With **Terri Lyne Carrington** (HonDMA '20), percussion, and

**Ingrid Jensen**, trumpet

*Dean of Jazz Arts*

## PROGRAM

*Selections to be chosen from the following*

**Chris Zuar** (MM '13)

*Anthem*

**Josephine (Joie) Bianco**, vocals

**Terri Lyne Carrington**

(arr. Chuck Owen)

*Mindful Intent*

**Carla Bley**

(arr. Chuck Owen)

*Lawns (Two Hearts)*

**Liam Ryan**, vocals

**Aaron Parks**

(arr. Chuck Owen)

*Trapped in the American Dream*

**Marley Howard**, vocals

**Terri Lyne Carrington**

*Samsara (For Wayne)*

**MSM Jazz Arts Quintet**

**Dexter Birkenbeuel**, Bandleader and piano

**Simon Nyivana**, alto saxophone

**Emile Berlinerblau**, bass

**Terri Lynn Carrington**, percussion

**Wayne Shorter**

(arr. Andrew Rathbun [DMA '11])

*Witch Hunt*

**Terri Lyne Carrington**

(arr. Toni Vaquer  
and Chuck Owen)

*Waiting Game*

**Geri Allen**

(arr. Jim McNeely)

*Unconditional Love*

**Kayla Arthur**, vocals

**Linda May Han Oh** (MM '08)

(arr. Jim McNeely)

*10 Minutes Till Closing*

# MSM JAZZ ORCHESTRA

**Jim Saltzman** (DMA '18), Director

**Terri Lyne Carrington** (HonDMA '20), percussion

**Ingrid Jensen**, trumpet

## WOODWINDS

**Ian Weidmann**,

alto saxophone  
*San Antonio, Texas*

**Tess Overmyer**,

alto saxophone  
*Newcastle, Australia*

**Andrew Peterson**,

tenor saxophone  
*Shoreview, Minnesota*

**Christian Holm-**

**Svendsen**,  
tenor saxophone  
*Hillerød, Denmark*

**Davide Sgarra**,

baritone saxophone  
*Varese, Italy*

## BRASS

**Alejandro Berti**,

trumpet  
*Astoria, New York*

**Kalia (Kal) Ferretti**,

trumpet  
*New York, New York*

**Carter Eng**, trumpet

*Seattle, Washington*

**Jonah Hieb**, trumpet

*Seattle, Washington*

**Bruno Tzinas**,

trombone  
*Miami, Florida*

**Laura Orzechoski**,

trombone  
*Philadelphia, Pennsylvania*

**Theodore Stone**,

trombone  
*Houston, Texas*

**Chase Bautista**,

bass trombone  
*San Jose, California*

## RHYTHM SECTION

**Johannes Haggmund-**

**Hansen**, guitar  
*Faaborg, Denmark*

**Sungtaek Choo**, piano

*Seoul, South Korea*

**Scott Robert**, piano

*Danbury, Connecticut*

**Steven Bowman**, bass

*Chicago, Illinois*

**Julian Wittich**, bass

*Taipei, Taiwan*

**Adam Wacks**, drums

*Millburn, New Jersey*

**Kabelo Mokhatla**,

drums  
*Kempton Park, South Africa*

## VOICE

**Liam Ryan**

*Weston, Florida*

**Marley Howard**

*Manchester, Connecticut*

**Josephine (Joie)**

**Bianco**  
*Staten Island, New York*

**Kayla Arthur**

*Philadelphia, Pennsylvania*

# ABOUT THE ARTISTS

## **Jim Saltzman** (DMA '18), Conductor

Armed with a rich harmonic palette, colorful and commanding sound, and diverse compositions, saxophonist, composer, and educator Jim Saltzman has been quietly developing his creative voice in the greater New York City jazz community for over two decades. Hailed by the *Boston Globe* as a “postmodern jazz saxophonist” that “plays with passion and intensity” and *All Music* as a “force to be reckoned with,” Saltzman is ready and determined to document the next journey in his creative process. Saltzman has performed with musicians such as George Coleman, James Moody, Eddie Gomez, Jon Faddis, and many others, as well as various jazz clubs throughout New Jersey and New York City, including the Blue Note, Smalls, Cecil’s, Shanghai Jazz, and many others. His daily interactions with his colleagues in the jazz community today are inspiring, exciting, influential, and have provided him with some of his favorite experiences.

As a composer, Saltzman loves to explore the possibilities of color within the large jazz ensemble. Despite being extraordinarily color blind, he views the orchestration colors created while composing to be a vital element of his music. Often times cinematic, he strives to write thought provoking music that shows respect for the jazz tradition, but is simultaneously looking to create honest, sincere music for large jazz ensembles. Jim was a member of the BMI Jazz Composers Workshop from 2009–2011, and was awarded the 2011 BMI Foundation Charlie Parker Composition Prize for his composition *Road To Zion*. His Manny Albam Commission work, *Multiple Personality Disorder*, premiered at the 24th annual BMI Jazz Composers Workshop concert. His CD of original compositions *Hidden Intentions* was released in April 2007 on Jazz Excursion Records; it was chosen as one of the “Top Ten Jazz CD’s of 2007” by the *Boston Globe*, and was also listed in the “Critics Picks, Top Jazz CD’s of 2007” by *Jazz Times*. Jim has also recorded two additional CDs, *Along the Way* (2000), and *Aggregate* (2003).

As an emerging scholar, Jim has done extensive research in the field of jazz history. His doctoral research was on the influence of Maurice Ravel’s *Valse Nobles et Sentimentales* on jazz composer Billy Strayhorn. His substantial Master’s thesis, “Stylistic Aspects in the Improvisations of Tenor Saxophonist Warne Marsh,” examines the relationship between Warne Marsh, Lee Konitz, and Lennie Tristano. Jim was the music curator for *Fascinating Rhythms: Music of the*



*Jazz Age* for the Cooper Hewitt Smithsonian Design Museum's *The Jazz Age: American Style in the 1920s* exhibition (April 7–August 20, 2017).

A passionate and dedicated educator, Jim believes that it is vital for musicians to continue the tradition while simultaneously looking forward towards the future. He currently is on the teaching faculty at Manhattan School of Music (in the Precollege, undergraduate, and graduate Jazz Arts program). The next transformation in Jim's music will be documented on a new recording in 2024. He lives in New Jersey with his wife, two children, and dog. When not performing, composing, practicing, or teaching music, he can be found long distance running, hiking in the woods, and saving seeds for his vegetable garden.

## **Terri Lyne Carrington** (HonDMA '20), percussion

Terri Lyne Carrington is an NEA Jazz Master, Doris Duke Artist, and four-time Grammy Award-winning drummer, composer, producer, and educator. After studying under a full scholarship at Berklee College of Music, Carrington worked as an in-demand musician in New York City, and later moved to Los Angeles, where she gained recognition on late night TV as the house drummer for both the Arsenio Hall Show and Quincy Jones' *VIBE* TV show, hosted by Sinbad.

While still in her twenties, Ms. Carrington toured extensively with Wayne Shorter and Herbie Hancock, among others. In 2011 she released the Grammy Award-winning album, *The Mosaic Project*, featuring a cast of all-star women instrumentalists and vocalists, and in 2013 she released, *Money Jungle: Provocative in Blue*, which also earned a Grammy Award, establishing her as the first woman ever to win in the Best Jazz Instrumental Album category.

To date Ms. Carrington has performed on over 100 recordings and has been a role model and advocate for young women and men internationally through her teaching and touring careers. She has toured or recorded with luminary artists such as Al Jarreau, Stan Getz, Woody Shaw, Clark Terry, Diana Krall, Cassandra Wilson, Dianne Reeves, James Moody, Yellowjackets, Esperanza Spalding, Kris Davis, Chaka Khan, Natalie Cole, and Nancy Wilson.

In 2019 Ms. Carrington was granted The Doris Duke Artist Award, a prestigious acknowledgment in recognition of her past and ongoing contributions to jazz music. Also in 2019, her collaborative project, Terri Lyne Carrington and Social Science (formed with Aaron Parks and Matthew Stevens), released their album, *Waiting Game*, inspired by the seismic changes in the ever-evolving social and political landscape. The double album expresses an unflinching, inclusive, and compassionate view of humanity's breaks and bonds through an eclectic program

melding jazz, R&B, indie rock, contemporary improvisation, and hip-hop. *Waiting Game* was nominated for a 2021 Grammy Award and has been celebrated as one of the year's best jazz releases by *Rolling Stone*, *Downbeat*, *Boston Globe*, and *Popmatters*. *Downbeat* describes the album as, "a two-disc masterstroke on par with Kendrick Lamar's 2015 hip-hop classic, *To Pimp a Butterfly...*" and garnered three of their critics poll awards, Album of the Year, Group of the Year and Artist of the Year. Ms. Carrington was also named Artist of the Year by *Jazz Times* Critics Polls, the *Boston Globe*, and the Jazz Journalists Association.

Ms. Carrington has received honorary doctorates from Manhattan School of Music, York University, and Berklee College of Music, where she currently serves as the Founder and Artistic Director of the Berklee Institute of Jazz and Gender Justice, which recruits, teaches, mentors, and advocates for musicians seeking to study jazz with racial justice and gender justice as guiding principles.

She has curated musical presentations at Harvard University, Schomburg Center for Research in Black Culture, and the John F. Kennedy Center, and has enjoyed multi-disciplinary collaborations with esteemed visual artists Mickalene Thomas and Carrie Mae Weems. She is also the artistic director for Detroit's multi-disciplinary arts organization, the Carr Center.

In 2022, the curator and activist authored two books; a children's book entitled *Three of a Kind*, on the making of the Allen Carrington Spalding trio, and the seminal collection, *New Standards: 101 Lead Sheets By Women Composers*, another illustration of how she has worked tirelessly to fight for inclusivity and raise the voice of women, trans and non-binary jazz musicians. Accompanying the book is her latest album, *new STANDARDS vol.1*, featuring 11 selections from the songbook with an all-star band. In 2023, the album won a Grammy Award for the best jazz instrumental album.

Carrington also curated a multi-media installation to accompany and expand on the message of the *New Standards* book and *new STANDARDS vol. 1* album. The installation premiered at Detroit's Carr Center, and was later featured at the Emerson Contemporary Media Art Gallery in Boston. This ambitious series of projects were created to shine a light on women composers in historic new ways.

Carrington serves as co-executive producer and musical director for the newly formed Jazz Music Awards and is a 2022 inductee into the American Academy of Arts and Sciences.

## **Ingrid Jensen, trumpet**

Born in Vancouver and raised in Nanaimo, British Columbia, MSM Dean of Jazz Arts Ingrid Jensen has been hailed as one of the most gifted trumpeters of her generation. After graduating from Berklee College of Music in 1989, she went on to record three highly acclaimed CDs for the ENJA record label, soon becoming one of the most in-demand trumpet players on the global jazz scene.

After a teaching stint in Europe in her early twenties—as the youngest professor in the history of the Bruckner Conservatory in Linz, Austria—Ingrid settled in New York City in the mid-1990s where she joined the innovative jazz orchestras of Maria Schneider (1994–2012) and Darcy James Argue (2002–present). More recently, Ingrid has performed with the Grammy-winning Terri-Lyne Carrington and her Mosaic Project, Helen Sung’s *Sung with Words* project, and the highly acclaimed all-star ensemble Artemis.

Ingrid is a featured soloist on the Christine Jensen Jazz Orchestra’s Juno-award-winning album *Treelines* (2011) and its successor *Habitat* (2013). She has performed with a multi-generational cast of jazz legends ranging from Clark Terry to Esperanza Spalding; Ingrid has also performed alongside British R&B artist Corrine Bailey Rae on *Saturday Night Live* and recorded with Canadian pop icon Sarah McLachlan. In addition to her busy sideman and featured soloist schedule, Jensen leads her own quintet, quartet, and organ trio. Her own bands have garnered glowing reviews and earned her a loyal fan base around the globe.

Also a dedicated jazz educator, Ingrid Jensen serves as Dean of Jazz Arts at Manhattan School of Music and is currently on faculty at both MSM and Purchase College. She has taught trumpet at the University of Michigan and Peabody Conservatory, performed and lectured as a guest artist with the Thelonious Monk Institute High School group featuring Herbie Hancock, and performed and taught at the Centrum Jazz Workshop, the Dave Brubeck Institute, the Banff Centre Workshop in Jazz & Creative Music, the Stanford Jazz Camp, and the Geri Allen Jazz Camp for young women.

Since her victory at the Carmine Caruso Trumpet Competition in 1995, Jensen has sat on the judges’ panel twice for said competition. She is regularly invited to trumpet festivals around the world and recently served as Artist-in-Residence

at the prestigious Monterey Jazz Festival, performing with her own quintet and giving tribute to the great Geri Allen, with fellow Artist-in-Residence Tia Fuller. In 2019, Ingrid was the recipient of the Jazz Journalists Association's Trumpeter of the Year Award.

One of Ingrid's most frequent and closest collaborators is her sister, saxophonist and composer Christine Jensen. The sisters' release, *Infinitude*, featuring the brilliant guitarist Ben Monder, received heavy praise from the jazz community as did Ingrid's latest recording, *Invisible Sounds*. The album, honoring the late great Kenny Wheeler, received critical acclaim and led to a feature on NPR's *Jazz Night in America* hosted by Christian McBride.

Ingrid Jensen plays a custom Monette trumpet, built personally by the master builder Dave Monette.

# **ABOUT THE JAZZ ARTS PROGRAM**

Manhattan School of Music was one of the first conservatories in the United States to acknowledge the importance of jazz as an art form by establishing undergraduate and graduate degree programs in jazz. The program is one of the richest of its kind, combining systematic and rigorous conservatory training with a myriad of performance and networking opportunities in New York City. In addition to a variety of small combos, student ensembles include the Latin Jazz Orchestra, Jazz Orchestra, the Jazz Chamber Ensemble, and the Jazz Composers' Orchestra. The program is under the leadership of Dean of Jazz Arts and jazz trumpet faculty member Ingrid Jensen.

In addition to studies with a faculty drawn from the highest ranks of the jazz world, students are provided opportunities to play for and observe world-renowned guest artists. Master classes in recent years have been presented by Terrence Blanchard (trumpet), Billy Childs (piano, composition), Buster Williams (bass), Ron Carter (bass), Christian Scott (trumpet), Barry Harris (piano), Stefon Harris (vibraphone), Maria Schneider (composition), Vijay Iyer (piano), Jason Moran (MM '97) (piano), Christian McBride (bass), Jimmy Heath (tenor saxophone), Jon Faddis (trumpet), Gary Burton (vibraphone), and Wycliffe Gordon (trombone).

Every concert season, prominent guest artists are featured with our large ensembles, providing enriched performance experiences for students. Guest artists have included Omar Thomas, Jim McNeely, Jane Monheit, Candido, Dave Liebman, Randy Weston, Joe Lovano, Bob Mintzer, Randy Brecker, Jon Faddis, Paquito D'Rivera, and Miguel Zenón (MM '01).

**Ingrid Jensen**, Dean of Jazz Arts

**Edward Gavitt**, Assistant Dean for Artistic Operations



**M** Manhattan  
School of Music

# VISIT OUR CAMPUS STORE!

The Manhattan School of Music Campus Store offers musical supplies and a wide variety of MSM gifts and apparel for all ages.



LOCATION  
**Student Union**  
(on the main floor,  
above the cafeteria)

REGULAR HOURS  
**MON-SAT\***  
**9:30 AM-4:30 PM**  
*\*when Precollege is in session*

SHOP ONLINE  
**STORE.MSMNYC.EDU**



*The Galaxy Society*

# What Will Your Legacy Be?

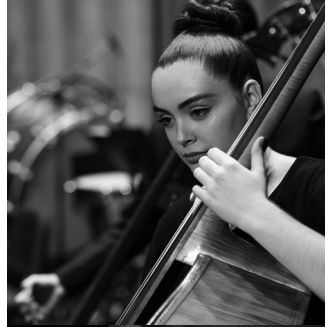
Through a bequest or other planned gift, you can help to ensure that Manhattan School of Music will provide a music education of the highest quality to exceptionally talented young artists for generations to come while also strengthening the School's long-term financial health.

Bequests are one of the easiest ways to create a living legacy and to help MSM meet important priorities, including increasing our scholarship endowment and supporting our world-class faculty.

For further information and to join our Galaxy Society, which honors those who have committed to making a planned gift to the School, **please contact Susan Madden, Vice President for Philanthropy**, at 917-493-4115, or visit: [msmnyc.edu/galaxy-society](http://msmnyc.edu/galaxy-society).

# Help a young artist reach for the stars!

**MSMNYC.EDU/GALAXY-SOCIETY**





# MANHATTAN SCHOOL OF MUSIC DONORS

Gifts received in FY 2024 (July 1, 2023–June 30, 2024)

Manhattan School of Music is deeply grateful to the community of generous donors who support our commitment to excellence in education, performance, and creative activity and to the cultural enrichment of the larger community. For more information about giving opportunities, please contact Susan Madden, Vice President for Philanthropy, at 917-493-4115 or smadden@msmny.edu.

## \$2 Million +

Noémi K. Neidorff (BM '70,  
MM '72, HonDMA '17)☺

## \$500,000 to \$999,999

Alta Malberg (BM '69) and  
Marc I. Malberg, MD

## \$250,000 to \$499,999

Scott Dunn (MM '97) and  
Robbie Moray

Estate of Maurice Eisenstadt  
Federal Emergency

Management Agency  
Gart Family Foundation

Jane A. Gross☺

Ilene\* and Edward Lowenthal  
(HonDMA '23)☺

Robert Sharon ('79)  
Twiford Foundation

## \$100,000 to \$249,999

Ruth Golden†

John Graham and Paul Ochman  
Susan Rochlis

Steven P. Singer and Alan S. Salzman  
Yvonne and Howard Tsao

## \$50,000 to \$99,999

Joan Taub Ades (HonDMA '14)☺

Arts and Letters Foundation  
Gabrielle Bamberger☺

Estate of Elizabeth G. Beinecke  
Justin Bischof (BM '90,  
MM '92, DMA '98)

Chloe Flower (PC '00)

Lorraine Gallard and Richard H. Levy☺

David G. Knott and Françoise

Girard / McKinsey & Company  
Frank Lotrario (BM '63, MM '65)

Susan Madden†

Bill and Patricia O'Connor

Arthur and Mae Orvis Foundation☺

Rosalie J. Coe Weir Foundation  
The Rubin-Ladd Foundation

## \$25,000 to \$49,999

The Augustine Foundation☺

Kishore Ballal and Maithili Rao

Bettina Baruch Foundation

Susan Ennis and Owen Lewis

The Enoch Foundation☺

Clark R. Green Charitable Foundation

Eric Gronningsater

Carol B. Grossman☺

Raul M. and Magdalena Gutierrez

Nancy Freund Heller and Jeffrey Heller

Han Jo Kim

Estate of Florence Nachman

New York State Council on the Arts

Perpetual Kindness Foundation

Fan Fox and Leslie R.  
Samuels Foundation☺

Paul and Joanne Schnell  
/ Skadden Arps

Estate of Harold Schonberg

Chiona Xanthopoulou-Schwarz

Horace Silver Foundation

/ Jemela Mwelu

Mónica and Angel Sosa

Nils Vigeland

Maria and Guillermo Vogel

Nanar and Tony Yoseloff

## \$10,000 to \$24,999

Two Anonymous Donors

3 Summers of Lincoln

Joyce Aboussie

Alfredo and Mita Aparicio

Louis Armstrong Educational

Foundation☺

Balenciaga

The Theodore H. Barth Foundation☺

The Frank and Lydia

Bergen Foundation

Carla Bossi-Comelli (HonDMA '20)☺

Delin and Abelardo Bru☺

Luisa Guembes-Buchanan (BM '63)

Fondation Rumsey-Cartier

Dr. Andre H Clavel Charitable

Foundation

Complete Mechanical Solutions

Evco Mechanical Corporation☺

Edith Hall Friedheim (MM '72)

Karey and Javier Gonzalez

Marcia Clay Hamilton (HonDMA '23)

and Don Hamilton☺

The Joel Foundation

J.C.C. Fund, Japanese Chamber of

Commerce and Industry of New York

Jephson Educational Trusts☺

Max Kade Foundation

Nancy Kissinger ('54)

Ruth M. Knight Foundation☺

Dominique Laffont

Samuel M. Levy Family Foundation

The Walter W. Naumburg Foundation

Margot Patron☺

Saul D. Raw and Constance E. Nickel

Lucie Robert† and Jeffrey Cohen†

A. White Rose Foundation

Carl and Aviva Saphier

Shoshana and Israel Schachter

Mari and Kenneth Share

Susan and Sam Stricklin

Michelle Deal Winfield and

Claude L. Winfield

Allen and Laura Yang

Frank and Jean Zhang /

Jin Hua Foundation

## \$5,000 to \$9,999

An Anonymous Donor

Terry L. Allison and Sylvain Héту

The MCJ Amelior Foundation

The ASCAP Foundation☺

Ed Annunziato

The Hilaria and Alec

Baldwin Foundation

The Barker Welfare Foundation

Chartwells Dining Services

Bond Schoeneck & King

Estate of Morton B. Cohen

Catherine and Michael Diefenbach

EALgreen

EvensonBest

James Gandre† and Boris Thomas☺

J & J Flooring

Sylvia Hemingway

Howard Herring (MM '78,  
HonDMA '15)

Edward F. Limato Foundation

The Arthur Loeb Foundation

Marquis George MacDonald

Foundation☺

The Clement Meadmore Foundation

Jane Olian† and Donna Gill†,

for Classical Singing and

New York in June

Evco Mechanical Corporation

James J. Peterscak

(BM '66, MM '68)☺

David (HonDMA '07) and

Susan Rahm☺

Patrick and Marti Ritto

Mary and Morris Rossabi

Antoine Schetritt and

Amanda Brotman

Irene Schultz

Arthur T. and Beverly Shorin

Steinway & Sons

Anne Tokar and Dana Leifer

Flavio Varani (BM '68, MM '70)

The Wonderful Foundation

## \$2,500 to \$4,999

An Anonymous Donor

Advanced Home Audio

Margot Alberti de Mazzeri☺

Carl Baron (MM '11) and

Danielle Wiener-Bronner

Steve and Elisa Baroni

John K. Blanchard (MM '89)†

Elizabeth A. Browne

Ernest W. Chung & Mary A. Lee

Lubrano Ciavarra Architects

Steve Dawson

Susan Elizabeth Deaver

(BM '75, MM '76, DMA '94)†

Eagan Family Foundation

Emerson Reid

Dianne Flagello (BM '52,  
MM '52, HonDMA '99)☺

General Plumbing Corporation

Hans Gesell☺



Joyce Griggs†  
 Kimberly D. Grigsby ('93)  
 Coco Han  
 Steven and Debra Hanks  
 Peter L. Horvath (BM '64, MM '65)☺  
 Israel Discount Bank of New York  
 Michael A. Kaplan ('91)  
 Chloe Kiffer (MM '14, PS '15)†  
 Frederick Loewe Foundation  
 Peter and Ayumi Manda  
 Meera Ani and Nikhil Iyengar  
 McDougal Family  
 Kevin Meserve / Voya Financial  
 Solomon Mikowsky\*†☺  
 Jason Mraz Foundation  
 Anthony Napoli  
 Julie Newdoll  
 New York City Tourism Foundation  
 Barbara O'Reilly (PC '89)  
 and Dermot O'Reilly  
 Cathy R. Paul (MM '84)  
 The Presser Foundation☺  
 Barbara L. Reissman  
 RIK Electric Corporation  
 Alfred and Jane Ross Foundation  
 Cynthia and Thomas Sculco  
 John and Julia Smith  
 Juying Song  
 Fondation Igor Stravinsky  
 Michael Stewart  
 The Widder Foundation  
 Keith L. Wiggs (BM '84)☺  
 Victoria Fasani Williams  
 (BM '70, MM '71)

**\$1,000 to \$2,499**

Three Anonymous Donors  
 Richard E. Adams (MM '61)☺  
 JJ and Ralph Allen  
 Hakan Altintepe  
 Approved Oil of Brooklyn  
 Pamela Averick  
 Peter Babej  
 Michael A. Bamberger☺  
 Eric M. Katz and Susan Barbash  
 Bellet Construction☺  
 Hayes Biggs† and Susan Orzel-Biggs  
 Ina Bort  
 Bright Power  
 Virginia Brody  
 Noreen Buckfire  
 Laurie Carney†  
 Claudia M. Catania†  
 Joanne Chan  
 Ted Chapin (HonDMA '24)  
 Xilun Chen  
 Linda Chesis  
 James and Kanako Clarke  
 Tony Converse  
 Delano Copprue†  
 The Cowles Charitable Trust  
 Michael R. and Nina I. Douglas  
 Eisenstein Family  
 Entertainment Community Fund  
 Gale Epstein  
 Daniel Epstein†  
 Donis G. Flagello  
 Jake Foley  
 Janet F. Frank ('65)

Patti Eylar and Charles Gardner  
 Buzzy Geduld  
 Karen and Phil Glick  
 Michael and Deborah Goldberg  
 Marsha Gordon and Javier Garcia  
 Ann Gottlieb  
 Thomas A. and Barbara Gottschalk  
 Joanne Greenspun☺  
 Jerald and Madelon Grobman  
 Adolphus C. Hailstork (BM '65,  
 MM '66, HonDMA '19)  
 Hansoree☺  
 Fred and Ellen Harris  
 Philipp Hecker  
 Jack (BM '63) and Helga Katz☺  
 Millen Katz (BM '74, MM '75)  
 and Patricia Anders☺  
 Michael Keeney  
 Michael Keller (BM '71)  
 Judith Klotz  
 Michael J. Kokola☺  
 Chung Nung Lee (MM '62)  
 and Bik-Lam Lee  
 Christiana M. Leonard  
 Gail R. Levine, Ph.D.  
 Peiyung Li  
 Maribel Lieberman  
 Kit and Victor Loo  
 Alan Lurie  
 Thomas Maguire (BM '66)  
 Mary Lou and George W.  
 Manahan (BM '73, MM '76)†  
 Elizabeth McCabe  
 Michael M. McClellan (MM '81)  
 Linda McKnight☺  
 Leslie Middlebrook Moore (MM '78)  
 Melvin Miller  
 Sarah Min  
 Michelle and John Morris  
 Hanna and Jeffrey Moskin  
 Oliff Family  
 Abby O'Neil and Carroll Joynes  
 Soyeon Park (BM '04,  
 MM '07, DMA '18)  
 Joanne Polk (DMA '90)† and  
 Jeffrey Langford†  
 Bennett Pologe  
 Jonathan Raskin  
 Robert and Regina J.  
 Rheinstein (MM '79)  
 Mary S. Riebold☺  
 The Rodgers & Hammerstein  
 Foundation  
 Sabian  
 Sir Cesare L. Santeramo KCSJ  
 Peter Santogade (BM '82)  
 Claire and John Sarno  
 Anthony Scelba (BM '70, MM '71)  
 So-Chung Shinn Lee (MM '19, PS  
 '21, PD '24) and Tony Lee  
 Ted Smith☺  
 Annaliese Soros☺  
 Richard W. Southwick  
 Carol Starmack and Claude Goodwin  
 William M. Stein, Jr.  
 Richard Stewart  
 Telebeam Telephone Systems  
 John Sweeney (BM '78, MM '85)  
 Tom, Robin & Sadie Trynin

Dace Udris☺  
 The Vigeland Family  
 Shalini P. Vijayan (BM '95, MM '97)  
 Adrienne and Gianluigi Vittadini  
 Mallory and Diana Walker  
 Andrew J. Weber (PC '00)  
 Kurt Weill Foundation for Music  
 Daniel E. Weiss  
 David J. Wolfsohn (DMA '84)  
**\$500 to \$999**  
 Two Anonymous Donors  
 Donald Albrecht  
 Orren Alperstein  
 Karen Faust Baer and Paul Baer☺  
 The Bagby Foundation for  
 the Musical Arts☺  
 Henrico Bautista  
 Rosemary and Arnold Bodner  
 Ety Bousso  
 George Braverman  
 Angela M. Brown (MM '81)  
 Amare and Stephan Brun  
 Richard B. Carr (MM '75)  
 Jennifer Chaitman  
 The Chang Family  
 Cosmos Communications  
 Allan J. Dean (BM '59)  
 Leon Lee Dorsey (MM '86)  
 Jon Feidner (MM '87)  
 Michael Fordney  
 Judith Friedman  
 Brian W. Gnojek (PS '14)  
 Arnold and Sandra Gold  
 Barry Goldberg  
 Kathleen B. Haskins  
 Daniel and Julia Hirschberg  
 Frank and Susan Hugus  
 Maureen D. Hynes (BM '74, MM '75)†  
 Gary and Donna Kunde  
 Ursula Kwasnicka (BM '66, MM '68)☺  
 Jose M. Landauro Engineers  
 Ira M. Lieberman ('57)  
 Kaiwen Lin  
 Yiduo Liu (MM '14)  
 Maria Magliaro Politano (MM '78)  
 Main Violin  
 Nicholas Mann†  
 Susan Olsen Maren (BM '68, MM '68)  
 Ann M. McKinney (MM '81)  
 Nathan Mortimer†  
 Marjorie Neuwirth☺  
 Nouveau Elevator  
 Edward Palanker (BM '62)  
 and Carol Palanker  
 Lanny Paykin and Laura Ann Hamilton  
 Jamie and Emily Propp  
 Susan Quittmeyer (MM '78)  
 and James Morris†  
 Frederick B. Rosoff  
 Mitchell Seider  
 Marc Silverman (MM '77, DMA '83)†  
 Inesa Sinkevych (PS '06, DMA '10)†  
 Robert and Victoria Sirota  
 Alexandra M. Smith (MM '10)  
 James Stalzer (BM '78, MM '79)☺  
 Jane Startz and Peter Barton  
 Josie Sun  
 David J. Tancredi (MM '76)

Mimi Tompkins†  
Rabbi Abraham Unger (BM '88)  
John Walton ('79)  
John and Nancy Wolf Family  
Charitable Fund

**\$250 to \$499**

Two Anonymous Donors  
Actors' Equity Foundation  
Roslyn Allison & Bert Lewen  
Alex Alsup  
Cathy and Robert Altholz  
Philip Ardell  
Patricia Barile  
Martha Todd Blaine (BM '68)  
Daniel Braiman  
Cynthia Bush  
Bonnie and David Cantor  
Dalmo ('58, '61) and Elizabeth Carra  
Deirdre Chadwick  
Caroline Cruise  
Mark Delpriora (BM '82, MM '87)†  
Michael and Marjorie Engber  
Elliot Fishbein  
Caroline and Shlomo Freidfertig  
Jie Fu

Mr. Henry R. Gibbel  
Pam Goldberg (MM '95)  
Jill and Rich Granoff  
Laura J. Greenwald (DMA '98)☺  
Isabel Greiner  
John Paul Herrmann and Tina Stuard  
Cynthia Hoffmann†  
Charlotte Tacy Holliday  
Charlie Huntley  
Judith and Leonard Hyman  
Stephen M. Johns (BM '69)  
Jacqueline M. Johnson (BM '15)  
Jacqueline Venable Jordan (BM '81)  
High Five Foundation  
Gary Trout and Kenneth Latsch  
Catherine Malfitano (BM '71)†  
Robert D. McFadden and  
Judith M. McFadden  
The Rev. Andy McQuery  
(BM '98, MM '00)  
Barbara Moss  
Allie Nava  
Gabrielle Palay  
Adam J. Plotkin and  
Adam B. Abrahams

Anthony Posk (BM '64)  
Richard Presser†  
Irwin Reese (MM '86)  
Samuel † and Hiroko Rhodes  
Reliable Office Solutions  
Roger F. Rose☺  
Phyllis Ross  
Suki Sandler  
Mary A. Schmidt (MM '81)  
Gaurav and Sawako Shukla  
Marte A. Siebenhar (BM '02, MM '04)  
Elliott M. Smith  
Henry and Jo Strouss  
Fen Yee Teh  
Nickolas and Liliana Themelis  
Patricia Thrash  
Julia C. Tobey ('67)  
Rebecca C. Tracy  
Katharina Volk and James Zetzel  
Caroline and Rodney Hine  
BeBe Shopp Waring (BM '52)  
Fawn Wiener  
Ivanka Zic  
**We also gratefully recognize the  
380 donors of gifts under \$250.**

The Applause Society recognizes the steadfast and loyal support of foundations and individuals who have made gifts to the School each and every year for 10 years or more.

We have made every effort to list MSM donors accurately. If your name is not listed as you wish, or if you notice an inaccuracy, please contact Jake Levyns in the Philanthropy Office at 917-493-4490, or at jlevyns@msmny.edu.

## THE SECOND CENTURY CAMPAIGN

### Gifts received since July 1, 2018

Donors who have made endowment gifts to the School's Second Century Campaign are helping to ensure a bright future for an extraordinary institution, one that has marshaled the talents and shaped the lives of accomplished and passionate musicians across the globe for more than a century.

**\$3,000,000**

Cate Ryan Estate

**\$2,000,000**

Michael Neidorff (HonDMA '17)\*  
and Noémi K. Neidorff (BM  
'70, MM '72, HonDMA '17)

**\$1,000,000 to \$1,999,999**

Gart Family Foundation  
Philip Kawin (BM '82, MM '85) Estate  
Carol Lieberman  
Flavio Varani (BM '68, MM '70)

**\$750,000 to \$999,999**

Joan Taub Ades (HonDMA '14)  
Terry Allison and Sylvain Hétu  
Maurice Eisenstadt Estate

**\$500,000 to \$749,999**

Alta Malberg (BM '69)  
and Marc Malberg  
Christianne Orto Estate

**\$250,000 to \$499,999**

Lorraine Gallard  
Eric Gronningsater  
Jane A. Gross  
Edward Lowenthal (HonDMA '23)  
Charles B. Nelson, Jr. (MM '54)  
Bill and Patricia O'Connor

Catherine Prince Trust  
Robert Sharon ('79)

**\$200,000 to \$249,000**

Scott Dunn (MM '97) and  
Robbie Moray  
Frank Lotrario (BM '63, MM '65)  
Walt (BM '74, MM '79) and Liz Sayre  
Twiford Foundation

**\$100,000 to \$199,999**

Kishore Ballal and Maithili Rao  
Fred J. Brotherton Charitable  
Foundation  
Luisa G. Buchanan (BM '63)  
Baisley Powell Elebash Fund  
Ruth Golden†  
William Goldstein (BM '65)  
John Graham and Paul Ochman  
Carol B. Grossman  
Marcia Clay Hamilton (HonDMA  
'23) and Donald Hamilton  
Warren Laffredo Estate  
Linda and Tobia Mercuro\*  
PwC Charitable Foundation  
Susan Rochlis  
Paul and Joanne Schnell  
Rosalie J. Coe Weir Foundation

**\$75,000 to \$99,999**

Gabrielle Bamberger  
The Chisholm Foundation  
Dorothy Strelsin Foundation  
Claude and Michelle D. Winfield

**\$50,000 to \$74,999**

Justin Bischof (BM '90,  
MM '92, DMA '98)  
Delin and Abelardo Bru  
Anna Bulgari Estate  
Shirley Katz Cohen Estate  
Chloe Flower (PC '00)  
So-Chung Shinn Lee (MM '19,  
PS '21, PPD '24)  
Susan Madden†  
Yvonne and Howard Tsao

**\$25,000 to \$49,999**

Arts and Letters Foundation  
Allen H. and Selma W. Berkman  
Charitable Trust  
Richard Gaddes (HonDMA '17)\*  
Marquis George MacDonald  
Foundation  
The Clement Meadmore Foundation  
The Arthur and Mae Orvis Foundation  
Perpetual Kindness Foundation  
Rochlis Family Foundation

The Rohatyn Group  
Horace Silver Foundation  
/ Jemela Mwele  
Theodore E. Somerville ('78)  
Harold and Ruth Stern Estate  
Niils Vigeland

#### **\$10,000 to \$24,999**

Licia Albanese-Puccini Foundation  
Alex Assouan Music Project  
Michael Bamberger  
Carl I. Baron

David (HonDMA '07) and Susan  
Rahm / Rahm Family Fund  
Irene Schultz

#### **Up to \$9,999**

John K. Blanchard (MM '89)  
George S. Braverman  
Xilun Chen  
Jeffrey Cohen and Lucie Robert  
Dan Epstein  
Dianne Flagello (BM '52,  
MM '52, HonDMA '99)  
Donis Flagello

Adolphus Hailstork (BM '63,  
MM '65, HonDMA '19)  
Michael Keeney  
Alan Lurie  
Mike and Lynn McClellan  
Jane Olian and Donna Gill,  
for Classical Singing and  
New York in June  
Oliiff and Waxenbaum Families  
Jonathan Raskin  
John K. Smith  
Steinway & Sons

## **THE CENTENNIAL PROJECT / NEIDORFF-KARPATI HALL RENOVATION**

The Centennial Project was an ambitious program of improvements to the School's architecturally distinguished campus coinciding with MSM's 100th anniversary. The centerpiece of the Project was the renovation of Neidorff-Karpati Hall, which has been transformed into a state-of-the-art venue to showcase our talented students. The Project also included a dramatic and welcoming new campus entrance on Claremont Avenue, new practice rooms, and an expansion of the main entryway and lobby.

#### **Anchor Gift**

Michael<sup>†</sup> (HonDMA '17) and  
Noémi K. Neidorff (BM '70,  
MM '72, HonDMA '17) / Centene  
Charitable Foundation

#### **\$2 million and above**

City of New York

#### **\$250,000 to \$499,999**

Baisley Powell Elebash Fund  
Marcia Clay Hamilton (HonDMA '23)  
and Don Hamilton  
David G. Knott and Françoise Girard  
Peter Luerssen/Maecenata  
Foundation  
Bill and Patricia O'Connor  
Melody Sawyer Richardson  
Sceneworks Studios  
**\$150,000 to \$249,999**  
Carla Bossi-Comelli (HonDMA '20)  
and Marco Pecori  
Lorraine Gallard and Richard H. Levy  
Edward Lowenthal (HonDMA '23)

#### **\$100,000 to \$149,000**

Ed Annunziato  
James Gandre<sup>†</sup> and Boris Thomas  
Linda and Toby Mercurio\*  
Michelle Ong/First Initiative  
Foundation Limited

#### **\$50,000 to \$99,999**

Alfredo and Mita Aparicio  
Jane A. Gross  
Raul M. and Magdalena Gutierrez  
New York State Council on the Arts  
Maria E. Salgar  
Chiona Xanthopoulou-Schwarz  
Mónica and Angel Sosa  
Maria and Guillermo F. Vogel

#### **\$25,000 to \$49,999**

Delin and Abelardo Bru  
Susan Ennis and Owen Lewis  
Richard Gaddes (HonDMA '17)\*  
Thomas Hampson (HonDMA '09)  
Nancy Freund Heller and Jeffrey Heller  
Margot Alberti de Mazzeri  
McKinsey & Company  
Margot and Adolfo\* Patron

Leonard Slatkin (HonDMA '13)  
and Cindy McTee  
Epp K. J. Sonin (MM '70)

#### **\$10,000 to \$24,999**

Joyce Aboussie  
Joan (HonDMA '14) and Alan  
Ades-Taub Family Foundation  
Louis Alexander (MM '79)  
Chartwells  
Sharon E. Daley-Johnson  
(BM '88, MM '89)  
Evco Mechanical Corporation  
Capt. Kenneth R. Force, USMS  
(ret.) (BM '64, MM '65, PD '70)\*  
Ruth Golden<sup>†</sup>  
Hyde and Watson Foundation  
Warren Jones  
Henry A. Kissinger\* and  
Nancy M. Kissinger ('54)  
Orin O'Brien<sup>†</sup>  
Arthur and Mae Orvis Foundation  
Carl and Aviva Saphier  
Dona D. Vaughn and Ron Raines

## **FOUNDER'S SOCIETY**

The Founder's Society honors the extraordinary generosity of the following individuals and institutions whose cumulative giving to Manhattan School of Music exceeded \$250,000 (as of June 30, 2024). These exceptional donors enable MSM to provide world-class conservatory training to immensely talented students. We are deeply grateful for their special dedication to the School's mission and culture of artistic excellence and musicianship.

#### **\$10 million and above**

Michael<sup>†</sup> (HonDMA '17) and  
Noémi K. Neidorff (BM '70,  
MM '72, HonDMA '17)/  
Centene Charitable Foundation

#### **\$5 million to \$10 million**

G. Chris Andersen and  
SungEun Han-Andersen

#### **\$1 to \$5 million**

Joan Taub Ades (HonDMA '14)  
and Alan M. Ades (HonDMA '10)\*  
The ASCAP Foundation  
Carla Bossi-Comelli (HonDMA '20)  
The ELMA Philanthropies  
Baisley Powell Elebash Fund  
Lorraine Gallard and Richard H. Levy  
Gart Family Foundation  
Gordon K. Greenfield\*

Gordon and Harriet  
Greenfield Foundation  
Estate of Jacqueline Kacere  
Estate of Phillip Kawin  
Estate of Dora Zaslavsky Koch  
Carol Lieberman  
Ilene\* and Edward Lowenthal  
(HonDMA '23)  
Alfred\* and Claude Mann  
Joseph F. McCrindle Foundation and  
Estate of Joseph F. McCrindle

<sup>†</sup>Deceased

<sup>†</sup>MSM Faculty/Staff

Estate of Homer Mensch Miller  
Family Foundation  
William R. Miller\*  
Bill and Patricia O'Connor  
Octavian Society  
Arthur and Mae Orvis Foundation  
Susan and David Rahm (HonDMA '07)  
Estate of Cathleen A. Ryan  
Peter Jay Sharp Foundation  
Flavio Varani (BM '68, MM '70)  
Helen F. Whitaker Fund

#### **\$500,000 to \$999,999**

An Anonymous Donor  
Altman Foundation  
Nancy Terner Behrman\* /  
Fund for Individual Potential  
Elizabeth G. Beinecke\*  
Mary Owen Borden Foundation  
Estate of Ruth Chatfield  
Estate of Maurice Eisenstadt  
Ann and Gordon Getty Foundation  
Michael W. Greene\*  
Eric Gronningsater  
Marcia Clay Hamilton  
(HonDMA '23) and Don Hamilton  
Jewish Foundation for  
Education of Women  
Estate of Kellogg Johnson  
Estate of Marga King  
Ruth M. Knight Foundation  
David G. Knott and  
Françoise Girard

Estate of Edith Kriss  
Peter Luerssen/Maecenata  
Foundation  
A. L. and Jennie L. Luria Foundation  
Alta Malberg (BM '69)  
and Marc Malberg  
Estate of Viola B. Marcus  
Andrew W. Mellon Foundation  
Linda Bell Mercurio\* and  
Toby Mercurio\*  
Solomon Mikowsky†  
Ambrose Monell Foundation  
Estate of Christianne Orto  
Fan Fox and Leslie R.  
Samuels Foundation  
Sceneworks Studio  
Harold and Helene Schonberg Trust  
Twiford Foundation

#### **\$250,000 to \$499,999**

An Anonymous Donor  
Annie Laurie Aitken Charitable Trust  
Estate of C. J. Stuart Allan  
Amato Opera Theater  
Arts and Letters Foundation  
Rose L. Augustine\* and  
Augustine Foundation  
Herbert R. and Evelyn Axelrod  
Michael R. Bloomberg  
Bristol-Myers Squibb Foundation  
Delin and Abelardo Bru /  
Kimberly-Clark Foundation  
Luisa G. Buchanan (BM '63)

Carnegie Corporation of New York  
Edgar Foster Daniels\*  
Ervika Foundation  
Cecilia and John Farrell  
Estate of Ellen G. Fezer  
First Initiative Foundation/  
Michelle Ong  
Yveta S. Graff\*  
Jane A. Gross  
Raul M. and Magdalena Gutierrez  
William Randolph Hearst Foundation  
Estate of Rea F. Hooker  
Jephson Educational Trusts  
Stanley Thomas Johnson Foundation  
Anna-Maria and Stephen  
Kellen Foundation  
Estate of Anna Case Mackay  
National Endowment for the Arts  
Charles B. Nelson Jr. (MM '54)  
New York State Higher Education  
Capital Matching Grant Board  
Henry Nias Foundation  
Catherine Prince Trust  
Estate of Rosalie Weir  
Melody Sawyer Richardson  
Jody and Peter Robbins  
Robert B. Sharon ('79)  
Evelyn Sharp Foundation  
The Starr Foundation  
Surdna Foundation  
Patrick N. W. Turner  
Gabe Wiener Foundation  
Maria and Guillermo Vogel

## **GALAXY SOCIETY**

Members of the Galaxy Society ensure the future of Manhattan School of Music through inclusion of the School in their long-range financial and estate plans. We are grateful for their vision and generosity, which helps ensure that MSM continues to thrive into the next century and enables aspiring young artists to reach for the stars.

An Anonymous Donor  
Richard E. Adams (MM '61)  
Joan Taub Ades (HonDMA '14)  
Louis Alexander (MM '79)  
Terry L. Allison and Sylvain Hétu  
Frank Bamberger  
Gabrielle Bamberger  
Alan J. Barry (BM '66)  
Renée Bash  
Peter Basquin  
Elizabeth Beinecke\*  
Yvette Benjamin  
Justin Bischof (BM '90,  
MM '92, DMA '98)  
Blanche H. Blitstein  
Louis M. Bonifati  
Seymour Botner  
Carla Bossi-Comelli (HonDMA '20)  
Susan Brenner  
Luisa G. Buchanan (BM '63)  
Lynda L. Ciolek (MM '76)\*  
Morton B. Cohen (BM '65 MM '67)\*  
James B. Coker  
Alex Davis\*  
Michael Devine (MM '80)  
Maurice Eisenstadt\*  
J. S. Ellenberger  
Susan Ennis  
Jonathan Fey\*  
Dianne (BM '52, MM '52,  
HonDMA '99) and Nicolas\* Flagello

Capt. Kenneth R. Force, USMS  
(ret.) (BM '64, MM '65, PD '70)\*  
Janet F. Frank  
Rabbi Mordecai Genn  
Ruth Golden†  
William Goldstein (BM '65)  
John Graham and Paul Ochman  
Marian Greathouse (BM '77)  
Carolyn Zepf Hagner (MM '69)  
Louis Halk\*  
Heather A. Hamilton  
(MM '93, MM '95)  
Laura Hamilton (BM '81, MM '82)  
Phillip N. Kawin (BM '82, MM '85)\*  
Diane Kettering (BM '78)  
Alan M. and Karen Schiebler Knierter  
Doris Konig ('66)  
Warren Laffredo ('59)\*  
Gail Levine, PhD  
Robert I. Lewy\*  
Carol Lieberman  
Frank Lotrario (BM '63, MM '65)  
Susan Madden†  
Alta (BM '69) and Marc I. Malberg  
Shigeru Matsuno ('63)  
Margaret Park Mautner\*  
Charlotte Mayerson\*  
Claire A. Meyer  
Solomon Mikowsky†\*  
Warren R. Mikulka  
Charles B. Nelson Jr. (MM '54)

Constance E. Nickel and Saul D. Raw  
Barbara and Dermot O'Reilly  
Christianne Orto\*  
John A. and Catherine Prince\*  
Anthony Posk\* (BM '64)  
Barbara L. Reissman  
Regina Rheinstein (MM '79)  
Melody Sawyer Richardson  
Mary S. Riebold  
Susan Rochlis  
Evelyn Ronell  
Ted (BM '81, MM '83) and  
Lesley Rosenthal†  
Wait (BM '74, MM '79) and Liz Sayre  
Gerald Sebesky (BM '62, MM '63)  
Alex Shapiro  
Robert B. Sharon ('79)  
Marc Silverman  
(MM '77, DMA '83)†  
Allen Lee Smith (BM '77)  
Theodore E. Somerville ('78)  
Amy R. Sperling  
Carleton B. Spotts (BM '53, MM '59)\*  
Sondra Tammam (BM '73)†  
Flavio Varani (BM '68, MM '70)  
Dona D. Vaughn and Ron Raines  
Keith L. Wiggs (BM '84)  
Theo George Wilson

# ANNUAL NAMED SCHOLARSHIPS

## College

Richard E. Adams French  
Horn Scholarship  
Louis Armstrong Educational  
Foundation Scholarship  
The ASCAP/Fran Morgenstern  
Davis Scholarship  
The Augustine Foundation Scholarship  
Theodore H. Barth Foundation  
Scholarship  
Bettina Baruch Foundation Scholarship  
Elizabeth Beinecke Scholarship  
Frank & Lydia Bergen  
Foundation Scholarship  
EALgreen Scholarship  
International Advisory Board  
Scholarship

J.C.C. Fund, Japanese Chamber  
of Commerce and Industry  
of New York Scholarship  
Jephson Educational Trust Scholarship  
Hugh Masekela Heritage Scholarship  
Walter W. Naumburg  
Foundation Scholarship  
Arthur and Mae Orvis  
Opera Scholarship  
Jim Petercsak Percussion Scholarship  
Presser Undergraduate Scholar  
Rochlis Family Foundation Scholarship  
David Rose Scholarship for Composing  
Sabian/Robert Zildjian  
Memorial Scholarship  
Harold and Helene Schonberg  
Pianist Scholarship  
Glen K. Twiford Piano Scholarship  
L. John Twiford Music Scholarship

## Precollege

Susan E. Deaver Woodwinds  
Scholarship  
Janice B. and Milford D. Gerton  
Precollege Scholarship  
Hansoree Scholarship  
Joel Foundation Precollege Scholarship  
Chloé Kiffer Precollege Scholarship  
Nancy Kissingner Precollege Scholarship  
Josephine Luby Precollege Scholarship  
Maureen MacDougall  
Precollege Scholarship  
Jason Mraz Foundation  
Precollege Scholarship  
Rochlis Family Foundation Scholarship  
Alfred and Jane Ross Foundation  
Precollege Scholarship  
Victoria Fasani Williams Precollege  
Scholarship in Piano

# ENDOWED NAMED SCHOLARSHIPS

## College

Alan M. and Joan Taub  
Ades Scholarship  
Licia Albanese Scholarship  
Augustine Guitar Scholarship  
Herbert R. and Evelyn  
Axelrod Scholarship  
Frances Hall Ballard Scholarship  
Artur Balsam Scholarship  
Hans & Klara Bauer  
Scholarship for Cello  
Jordan Berk Scholarship  
Selma W. Berkman Memorial  
Scholarship  
Vera Blacker Scholarship in Piano  
Luisa Buchanan Scholarship  
Carmine Caruso Scholarship  
Edgar Foster Daniels  
Scholarship in Voice  
Scott Dunn and Robbie Moray  
Scholarship in Collaborative Piano  
Baisley Powell Elebash Scholarship  
Gart Family Foundation Scholarship  
Lloyd Gelassen Fellowship  
Fund Scholarship  
Elva Van Gelder Memorial  
Piano Scholarship  
Rita Y. and Herbert Z. Gold Scholarship  
Ruth Golden Classical  
Voice Scholarship  
William Goldstein Scholarship  
John Graham and  
Paul Ochman Scholarship  
Michael W. Greene Scholarship  
Charles Grossman Memorial  
Scholarship  
Grusin/Rosen Jazz Scholarship  
Adolphus Hailstork-Mary  
Weaver Scholarship  
Marcia Clay Hamilton and  
Donald Hamilton Flute Scholarship  
William Randolph Hearst Scholarship  
Helen Fahnstock Hubbard  
Family Scholarship  
Alexandra Hunt Vocal Scholarship  
Deolus Husband Scholarship  
for Composition  
Eugene Istomin Capital  
Campaign Scholarship

Peter Karpati Scholarship  
Phillip Kawin Piano Scholarship  
Peter J. Kent Scholarship  
Marga and Arthur King Scholarship  
Krauter Violin Scholarship  
Edith Kriss Scholarship  
Lado Scholarship  
Warren Laffredo Memorial Scholarship  
Ilene and Edward Lowenthal  
Scholarship  
Marquis George MacDonald  
Scholarship  
Robert Mann Scholarship for  
Violin and Chamber Studies  
Viola B. Marcus Memorial Scholarship  
Masolinar "Mackie" Marks Scholarship  
Joseph F. McCrindle Scholarship  
Clement Meadmore Scholarship in Jazz  
Homer and Constance  
Mensch Scholarship  
Charles B. Nelson Jr. Scholarship  
in Classical Piano  
Samuel and Mitzi Newhouse  
Scholarship  
Birgit Nilsson Scholarship  
Scott Edward Oakley Scholarship  
in Musical Theater  
Mae Zenke Orvis Opera Scholarship  
Ethel Hollander Plancher Scholarship  
Paul Price Percussion Scholarship  
Rahm/Berkman Scholarship  
Judith Raskin Scholarship  
Susan Rochlis Scholarship  
Rodgers & Hammerstein Scholarship  
for Voice/Musical Theatre  
Jay Rubinton Scholarship  
Leon Russianoff Memorial Scholarship  
Elizabeth Byrne Sayre Scholarship  
in Musical Theatre  
Walt Sayre Trombone Scholarship  
Robert Sharon Scholarship  
in Collaborative Piano  
Scott Shayne Sinclair Scholarship  
Steven P. Singer and Alan Salzman  
Scholarship in Clarinet  
Joseph M. Smith Scholarship  
Margaret Hoswell van Der Marck  
Scholarship in Opera  
Flavio Varani Scholarship in Piano

Dona D. Vaughn Voice Scholarship  
Emily M. Voorhis Scholarship  
Rachmael Weinstock  
Scholarship in Violin  
Dora Zaslavsky Scholarship  
Avedis Zildjian Percussion Scholarship

## Precollege

An Anonymous Jazz  
Precollege Scholarship  
An Anonymous Precollege Scholarship  
Alex Assoian Music Project Scholarship  
Dr. Michelle Solarz August  
Scholarship in Piano  
Kate Bamberger Memorial  
Violin Scholarship  
Matilda Cascio Scholarship  
Cuker/Stern Scholarship  
Florence Duvall Scholarship  
Marion Feldman Cello Scholarship  
Dianne Danese Flagello Scholarship  
Chloe Flower Scholarship  
Dorothy Hales Gary Scholarship  
Jocelyn Gertel Scholarship  
Rosetta Goodkind Scholarship  
Andrew Goodman Memorial  
Scholarship  
Constance Keene Piano Scholarship  
Patinka Kopec Violin Scholarship  
Mary B. Lenom Scholarship  
Carol Lieberman Scholarship  
Frank and Joseph Lotrario Scholarship  
Susan Madden Scholarship  
Sassa Maniotis Scholarship  
Jan Morree Classical Music Scholarship  
Nana's Way Scholarship  
Carl Owen Memorial Scholarship  
Maitland Peters and Karen Beardsley  
Voice Scholarship  
Precollege Parents Scholarship  
Rita and Morris Nelson Scholarship  
Jonathan and Conrad Strasser  
Memorial Scholarship  
Yvonne and Howard Tsao Scholarship  
Elva Van Gelder Memorial  
Piano Scholarship  
Michelle Deal and Claude L. Winfield  
Jazz Scholarship



**Your gift supports MSM's important work nurturing and developing the next generation of performing artists. We thank you for sharing our belief in the transformative power of music!**

**GIVE TODAY!**



**MSMNYC.EDU/GIVING**



# MANHATTAN SCHOOL OF MUSIC LEADERSHIP

## Board of Trustees

Lorraine Gallard, Chair  
David G. Knott, PhD, Vice Chair  
James Gandre, EdD, President  
Nancy Freund Heller, Treasurer  
Noémi K. Neidorff (BM '70,  
MM '72, HonDMA '17), Secretary  
Kishore Ballal  
Terence Blanchard (HonDMA '17)  
Anthony Roth Costanzo (MM '08,  
HonDMA '22)  
Scott Dunn (MM '97)  
Susan Ennis  
Han Jo Kim, MD

Nicholas Mann  
Alexandre Moutouzkine  
(MM '03, PS '05, AD '06)  
Anthony Napoli  
Bebe Neuwirth (HonDMA '15)  
Bill O'Connor  
Paul T. Schnell  
Leonard Slatkin (HonDMA '13)  
Angel Sosa  
Yvonne Tsao  
Shalini Vijayan (BM '95, MM '97)  
Bernie Williams (BM '16)

*Trustees Emeriti*  
Joan Taub Ades (HonDMA '14)  
Carla Bossi-Comelli (HonDMA '20)  
Marcia Clay Hamilton (HonDMA '23)  
Thomas Hampson (HonDMA '09)  
Marta Istomin (HonDMA '05),  
*President Emerita*  
Edward Lowenthal (HonDMA '23)  
David A. Rahm (HonDMA '07),  
*Chair Emeritus*  
Robert G. Simon

## International Advisory Board

Carla Bossi-Comelli (HonDMA '20),  
Chair, Switzerland  
Mita Aparicio, Mexico  
Delin Bru, United States  
Alejandro Cordero, Argentina

Raul M. Gutierrez, Mexico/Spain  
Masaaki Maeda, Japan/United States  
Margot Patron, Mexico  
Chiona Xanthopoulou-Schwarz,  
Germany

Angel Sosa, Mexico  
Flavio Varani (BM '68,  
MM '70), Brazil/United States  
Guillermo Vogel, Mexico

## Artistic Advisory Council

Terence Blanchard (HonDMA '17)  
Anthony Roth Costanzo (MM '08,  
HonDMA '22)  
Glenn Dicterow  
Peter Duchin

Thomas Hampson (HonDMA '09)  
Stefon Harris (BM '95, MM '97)  
Marta Istomin (HonDMA '05),  
*President Emerita*  
Bernard Labadie (HonDMA '18)

Lang Lang (HonDMA '12)  
Bebe Neuwirth (HonDMA '15)  
Leonard Slatkin (HonDMA '13)  
Melissa Wegner (MM '05)  
Pinchas Zukerman (HonDMA '93)

## Alumni Council

Justin Bischof (BM '90,  
MM '92, DMA '98), Chair  
Michael Fahie (MM '02), Vice Chair  
Chira Bell (BM '22)

Blair Cagney (BM '18, MM '20)  
Ming Fong (PC '86, '87)  
Peng Guan (MM '23)  
Brian Holman (MM '04)

Kyunghee Kim (MM '96)  
Eganam Segbefia (MM '18)  
Jarrett Winters Morley (BM '20)

## President's Council

James Gandre, President  
Joyce Griggs, Executive Vice President and Provost  
Jeff Breithaupt, Vice President for Marketing,  
Communications, and Alumni Affairs  
Rebecca Charnow, Dean of Youth Education  
and Community-Career Connections  
Monica C. Christensen, Dean of Students  
Melissa Cocco-Fernandes, Vice President  
for Enrollment Management  
Reiko Fütting, Dean of Academic Core and  
Head of Composition and CPP  
Liza Gennaro, Dean of Musical Theatre  
Nicolas Gonzalez, Assistant Vice President for  
Strategic Innovation and Special Initiatives  
Carleen Graham, Dean of Vocal Arts  
Bryan Greaney, Associate Vice President  
for Facilities and Campus Safety

Ingrid Jensen, Dean of Jazz Arts  
JT Kane, Dean of Instrumental Studies  
and Orchestral Performance  
Devon Kelly, Chief of Staff and Liaison  
to the Board of Trustees  
Neeraj Kumar, Interim Chief Information Officer  
Susan Madden, Vice President for Philanthropy  
Carol Matos, Vice President for Administration  
and Human Relations  
Nathan Mortimer, Interim Senior Vice  
President and Chief Financial Officer  
Ruben Mullodzhanov, Associate Vice  
President of Finance and Controller  
Kelly Sawatsky, Dean of Academic Affairs  
Madeline Tolliver, Dean of Performance  
and Production Operations

## Department Chairs and Program Directors

Michelle Baker, Chair, Brass  
David Chan, Head, Orchestral Performance Program  
Linda Chesis, Chair, Woodwinds  
David Leisner, Chair, Guitar  
Reiko Fütting, Dean of Academic Core and  
Head of Composition and CPP  
John Forconi, Chair, Collaborative Piano  
Christopher Lamb, Chair, Percussion  
Jeffrey Langford, Associate Dean of Doctoral Studies  
George Manahan, Director of Orchestral  
Activities and Chair, Conducting

Nicholas Mann, Chair, Strings  
Ryan Kamm, Assistant Dean for Youth  
Programs and Director of Precollege  
Alexandre Moutouzkine, Co-Head, Piano  
Erin Rogers, Co-Artistic and Co-Administrative  
Advisor, Contemporary Performance Program  
Inesa Sinkevych, Co-Head, Piano  
Matt Ward, Co-Artistic and Co-Administrative  
Advisor, Contemporary Performance Program

# ABOUT MANHATTAN SCHOOL OF MUSIC

Founded as a community music school by Janet Daniels Schenck in 1918, today MSM is recognized for its 1,025 superbly talented undergraduate and graduate students who come from 54 countries and nearly all 50 states; its innovative curricula and world-renowned artist-teacher faculty that includes musicians from the New York Philharmonic, the Met Orchestra, and the top ranks of the jazz and Broadway communities; and a distinguished community of accomplished, award-winning alumni working at the highest levels of the musical, educational, cultural, and professional worlds.

The School is dedicated to the personal, artistic, and intellectual development of aspiring musicians, from its Precollege students through those pursuing doctoral studies. Offering classical, jazz, and musical theatre training, MSM grants a range of undergraduate and graduate degrees. True to MSM's origins as a music school for children, the Precollege Division is a professionally oriented Saturday music program dedicated to the musical and personal growth of talented young musicians ages 5 to 18. The School also serves some 2,000 New York City schoolchildren through its Arts-in-Education Program, and another 2,000 students through its critically acclaimed Distance Learning Program.

## Your gift helps a young artist reach for the stars!

To enable Manhattan School of Music to continue educating and inspiring generations of talented students and audiences alike, please consider making a charitable contribution today.

Contact the Philanthropy Office at 917-493-4434 or to make an online gift, scan this code or visit [giving.msmnyc.edu](https://giving.msmnyc.edu).



## Land Acknowledgment

We want to acknowledge that we gather as Manhattan School of Music on the traditional land of the Lenape and Wappinger past and present, and honor with gratitude the land itself and the people who have stewarded it throughout the generations. This calls us to commit to continuing to learn how to be better stewards of the land we inhabit as well.



**MSMNYC.EDU**